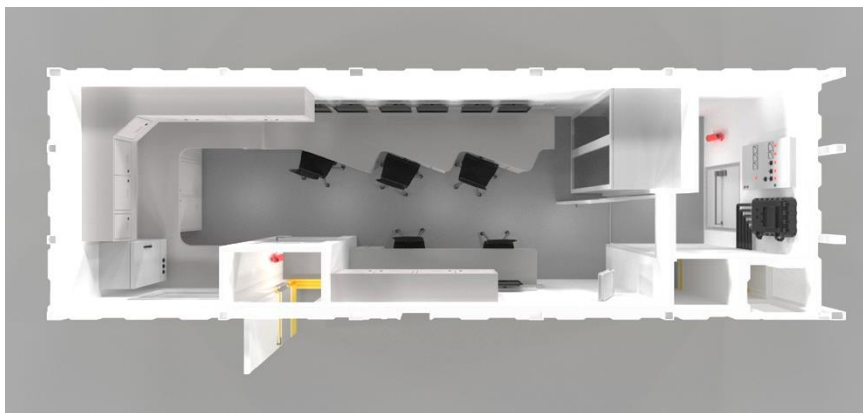


Zone 1 Mudlogging Modules 27ft and 30ft



Description

Designed to optimise workspace efficiency with a separate geological and laboratory area, our Mudlogging Modules can house your specialist equipment and resources in order to perform laboratory work in a safe and comfortable environment. They can be outfitted and modified to perform any number of functions to suit your exact project requirements. We have in stock a range of A60 Offshore Mudlogging Modules of 27 and 30 feet. These modules provide a high quality for you and your clients.



Technical specifications

Fire Rating: A60 SOLAS

Detection and Alarm System: Detection and alarm system with CPFG panel with all ancillary items for use up to Zone 1.

HVAC: 2 split type AHU type A/C system developed in-house to condition incoming pressurised air.

Framework Design Temperature: -20°C to +50°C

Electrical Connection:

Connection is 380-690Vac, 3Ph+E, 50/60Hz. Module is supplied with a 30m power cable as standard.

Dimensions and weight

27' Unit

8,230 (L) x 2,900 (W) x 2,726 (H)
 Tare Weight: 12,300 kg

30' Unit

9,000 (L) x 3,000 (W) x 2,726 (H)
 Tare Weight: 13,000 kg

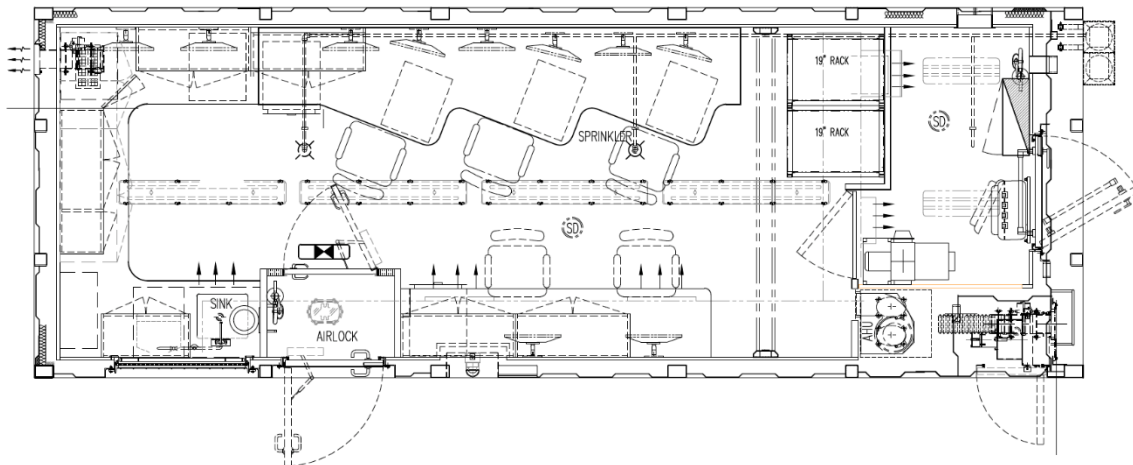
Global Compliance

ATEX, IECEx, CE Marked, DNV 2.7-1, DNV 2.7-2, EN 12079, A60 SOLAS

**Efficient, Safety-driven equipment, sales and rentals for
 our customers in the global critical industries**

Features & Benefits

- Detection and alarm system with Combined Pressurisation, Fire and Gas detection (CPFG) system with all ancillary items for Zone 1 use.
- A sink and / or a fume hood is provided.
- Large sample preparation area to perform all sample related procedures from washing and drying the sample to analysis, including drying oven.
- Storage trays, glassware and other sample related items.
- Geologists' and operators' work area supplied with electrical outlets, network connection ports and data display monitors.
- Pneumatic fire dampers are provided with optional N2 bottle inside.
- A60 window and A60 escape hatch (800 x 800 mm) are provided as per DNV 2.7-2 requirement.
- Optional sprinkler head and piping can easily tie into rig sprinkler system.
- CSC frame for minimised mobilization costs
- Fitted with non-combustible B15 wall panels to ensure high thermal resistance and maximum noise reduction.
- Easy access for all serviceable equipment for maintenance.
- Non-porous topstone epoxy desktop provided, easy to clean, stain resistant and impermeable to most chemicals.
- Centurion Accommodation & Modular offers flexible design modifications in line with client requirements on all types of Utility Modules, i.e. kitchen, mess, laundry, ablution, recreation etc.



**Efficient, Safety-driven equipment, sales and rentals for
our customers in the global critical industries**